




A NEW STAR
IS BORN.

elan

WWW.ELAN-YACHTS.COM



ELAN · IMPRESSION · 494

An underwater photograph looking up towards the surface. Sunlight rays (crepuscular rays) are visible, filtering down through the water from the bright surface. The water is a deep blue, and the surface is turbulent with white foam and bubbles. The overall mood is serene and ethereal.

“Ships are the nearest thing to dreams
that hands have ever made.”

Robert N. Rose

EXPLORE THE
WORLD, FIND
YOURSELF.

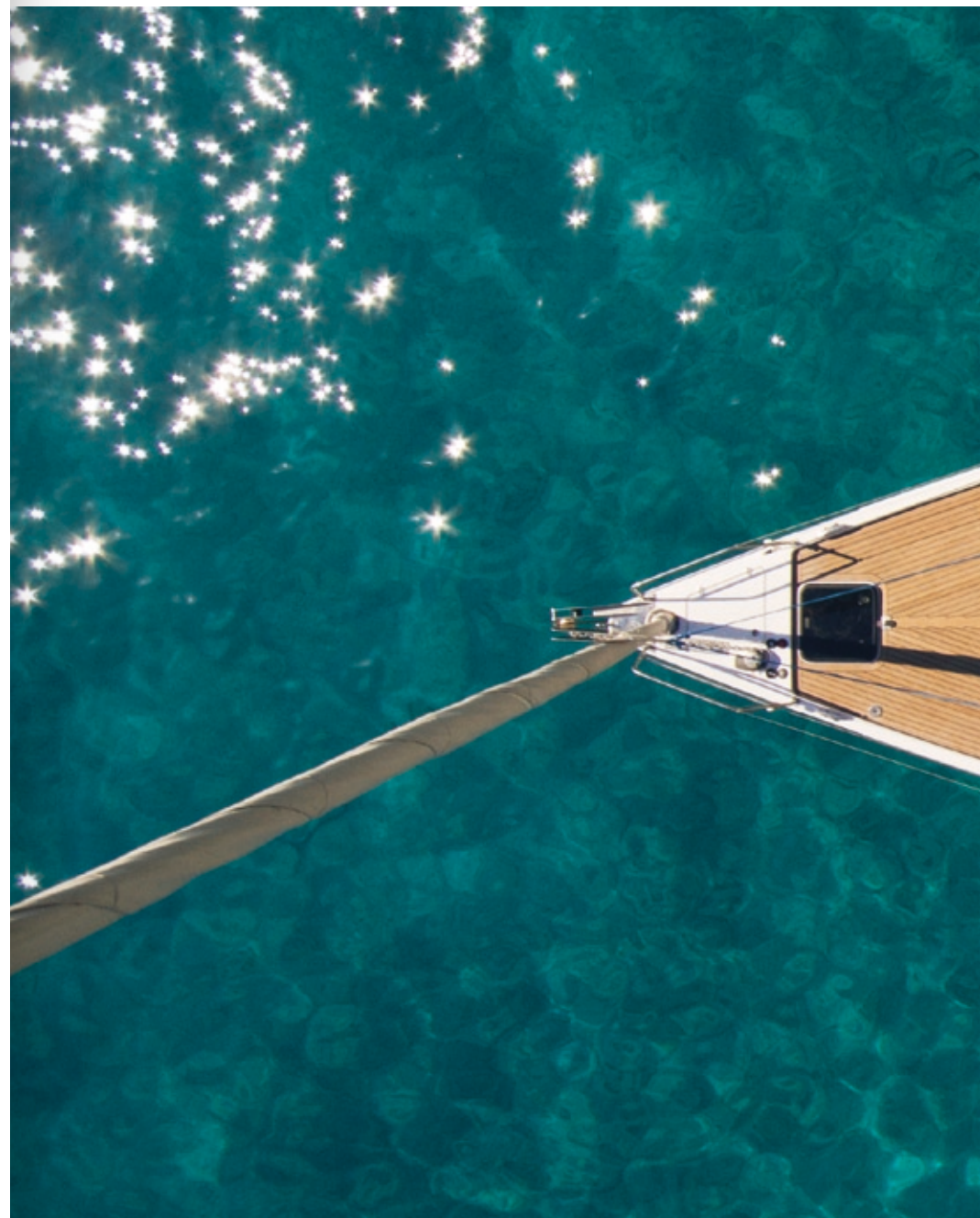


Leave port, set sail and let your cruising spirit take over. Get in touch with your inner Christopher Columbus. The further you go, the closer you will get to your true self.

DREAMS ARE MADE OF THIS.



Let your dreams come true. Step aboard the Impression 494 bluewater deck-saloon cruiser and experience a new sense of belonging. Set sail and make that passage you always dreamed of. Enjoy the luminous, elegant interior and unprecedented levels of comfort on board. Where do you want to take her next?










SPACE FOR COMFORT, SPACE FOR ADVENTURE.



Untangle, unwind and revel in the great outdoors. Discover an unprecedented level of comfort for days of enjoyment in the sun on the largest cockpit in its class, featuring longer U-shaped cockpit seats 2,1 m in length and a forward sun bed. Find a secluded bay and access the immaculate sea easily from the electrically operated swimming platform. And while there, serve yourself a crisp cold drink right from the cockpit fridge and outside bar. Embrace the spectacular view and enjoy every detail - designed to live unforgettable moments aboard, when sailing or at anchor.

THE PLEASURE OF SAILING.

The yacht delivers a consistently pleasurable sailing experience, which means fast cruising and easy handling, even when short-handed. We combined Rob Humpreys' hull design with an optimal rig and sail area, ensuring the yacht is stable and safe in every sea condition, yet with a very high pointing ability without sacrificing downwind performance. Another strong feature includes the twin wheel - twin rudder system, which ensures better control and handling even in extreme conditions, a self-tacking jib system, a through-deck furling genoa and furling gennaker as an option. All sheets run all the way to the steering position, which allows the helmsman to trim the sails himself, using two winches directly in front of the steering wheels.





SMART IS COMFORTABLE.



TWIN RUDDERS

The Volvo Ocean Race inspired solution by Rob Humphreys ensures better control and handling even in extreme conditions.



LIFERAFT STORAGE

The liferaft can be stored near the helm, on the port side.



SHORT-HANDED SOLUTIONS

All sheets run back to the helmsman's steering position, making sail trimming simple and accessible.



TRANSOM STORAGE

The spacious transom storage can accommodate a tender or other equipment.



COCKPIT FRIDGE & BAR

Cold drinks are always in reach at the cockpit bar, featuring a fridge and optionally even a sink in the outside galley.



LARGE U-SHAPED COCKPIT SEATING

The spacious U-shaped cockpit seating accommodates eight guests easily.

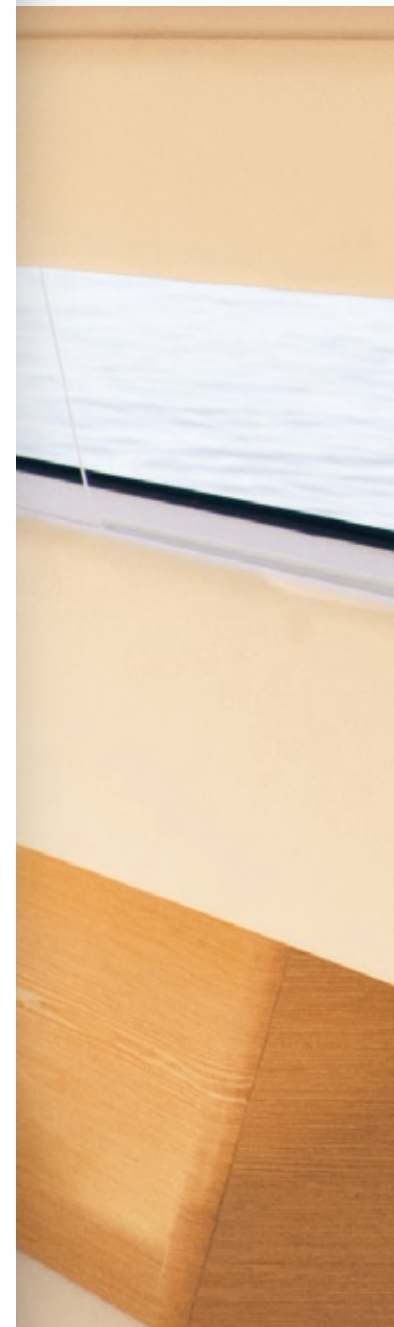






WELCOME TO MODERN LIVING IN COMPLETE COMFORT.

The interior welcomes you with plenty of space and natural light, thanks to the raised deck-saloon layout, numerous hull windows and portlights. Enjoy the open space social area, courtesy of the inverted layout, with the galley forward and the large open plan saloon located directly under the companionway, taking advantage of the yacht's full beam. Celebrate life with friends and family around the spacious saloon with a U-shaped settee and two additional seats. Step down to the roomy, functional galley and navigation station or discover the comfortable, stylish cabins.



THE INTERIOR, CREATED AROUND YOU



INTEGRATED HANDRAILS

The integrated handrails are a unique design feature, ensuring enhanced safety when under way, either under sail or when motoring.



FULL BEAM SOCIAL AREA

The saloon is positioned at the yacht's widest point, providing extra comfort for a pleasant stay on-board and ensuring maximum space for crew and guests.



U-SHAPED GALLEY

The functional U-shaped galley provides more comfort and safety when cooking while sailing or motoring.



INTEGRATED APPLIANCES

The microwave oven and coffee machine are integrated in the cabinets.



NAVIGATION STATION

The nav station features the media corner and various storage spaces.



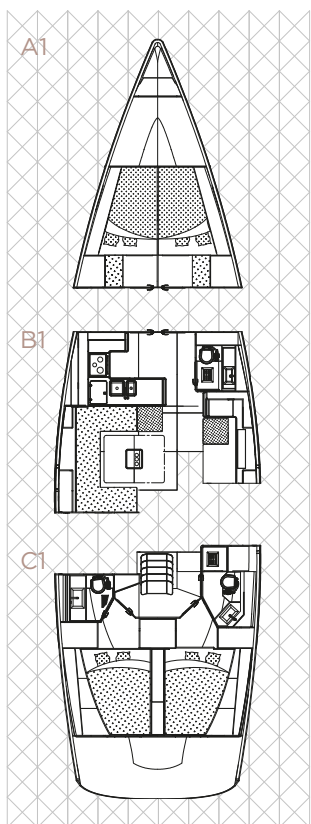
WINE-COOLER

The wine-cooler is located immediately adjacent to the open-space social area.

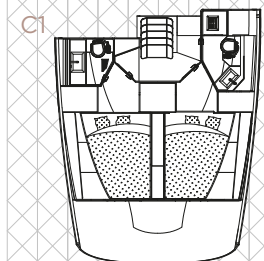


CUSTOMIZE YOUR INTERIOR.

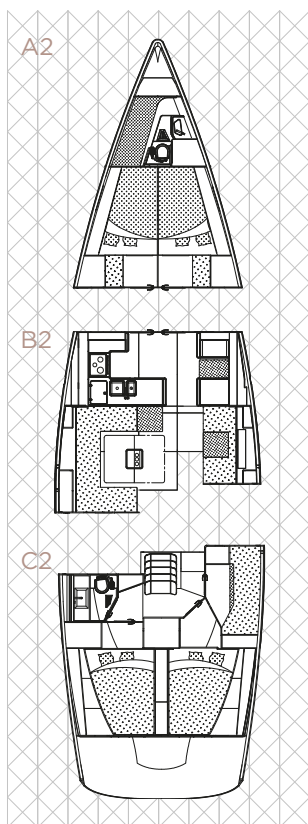
A1 Two front cabins



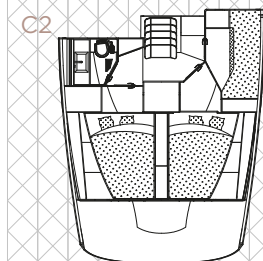
C1 Two aft cabins + two heads



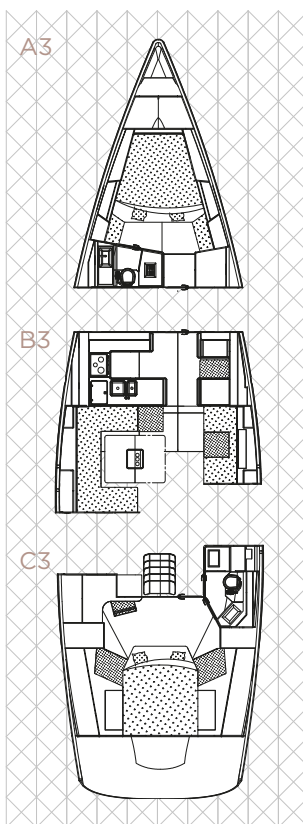
A2 Two front cabins +
A2 skipper quarters



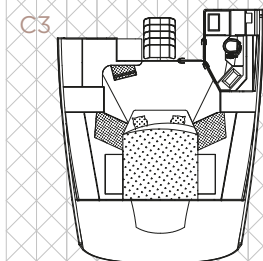
C2 Three aft cabins



A3 Master front cabin



C3 Master aft cabin



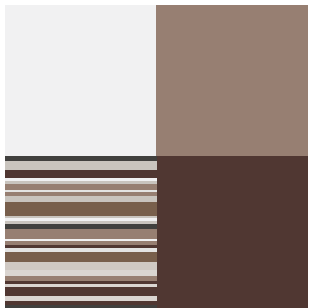
B1, B2, B3
Saloon

Choose your ideal number of cabins from a variety of nine different layouts, combined with the fully customizable utility room, and your sojourn aboard the Elan Impression 494 will undoubtedly generate a feeling of well-being and indulgence every day.

A STYLISH FIRST IMPRESSION.



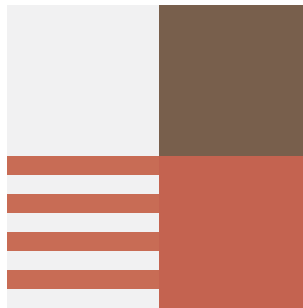
BASIC COLOUR SCHEME
Cotton



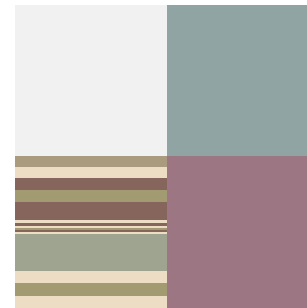
OPTIONAL COLOUR SCHEMES
Earth



Ocean



Sunset



Lavender

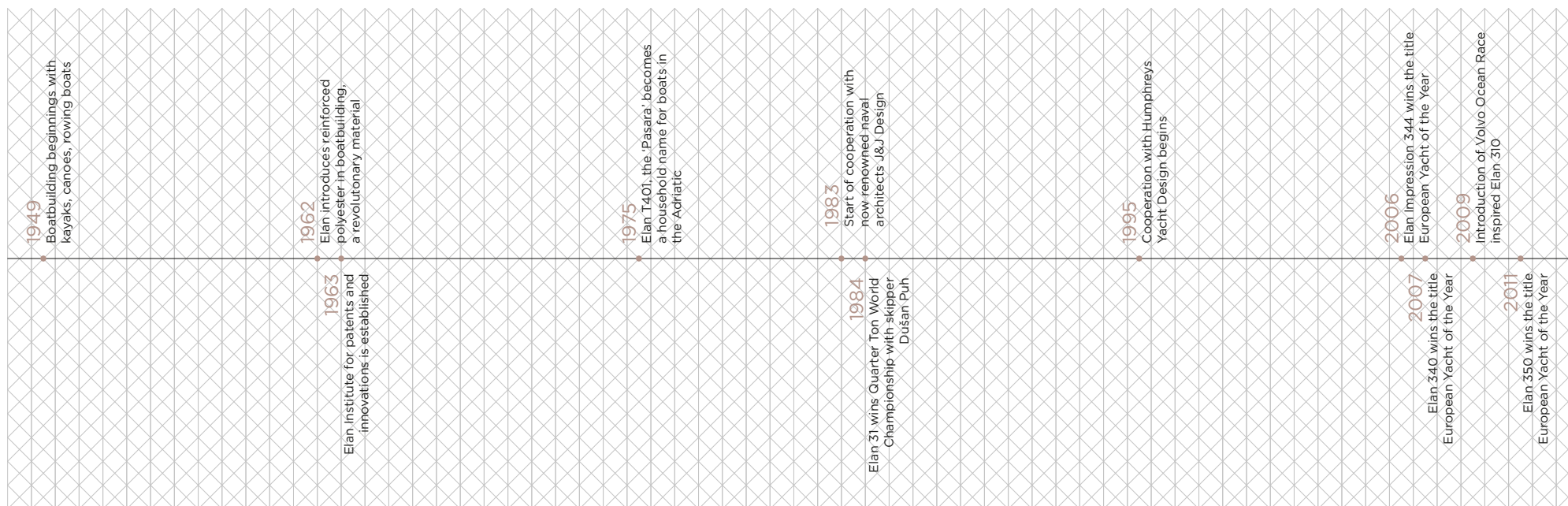


Every detail aboard the Impression 494 is stylishly coordinated to give you a warm, home-like feeling. Choose the basic color combination and you'll have all the textiles, pillows, towels, kitchenware and cutlery in sync.

With one basic and three different colour combinations, you will surely find your favourite style.

You can choose among assorted products in four different colour combinations featuring the Impression logo: glasses, cups, plates, cutlery, kitchenware, pillows, settee and seat covers, lazyjack covers, bed linen, slippers and towels.

MORE THAN 60 YEARS OF INNOVATIONS IN BOATBUILDING



Elan Impression 344



Elan 340



Elan Impression 514



Elan 410



Elan 350



Elan 210

The Elan and Impression brands embody a true passion for sailing, technological innovations and distinctive design. Every yacht emerging out of Elan's 16.000 sq meter shipyard in Slovenia is the result of our 65-year long passion for innovation-oriented quality boatbuilding. Certified by Germanischer Lloyd, our yachts are designed to withstand the toughest conditions, while bringing every owner pure sailing pleasure and excitement. Elan is committed to a comprehensive environmental management system, proven by the ISO 14001 standard.



WORKING WITH THE BEST.

HUMPHREYS YACHT DESIGN

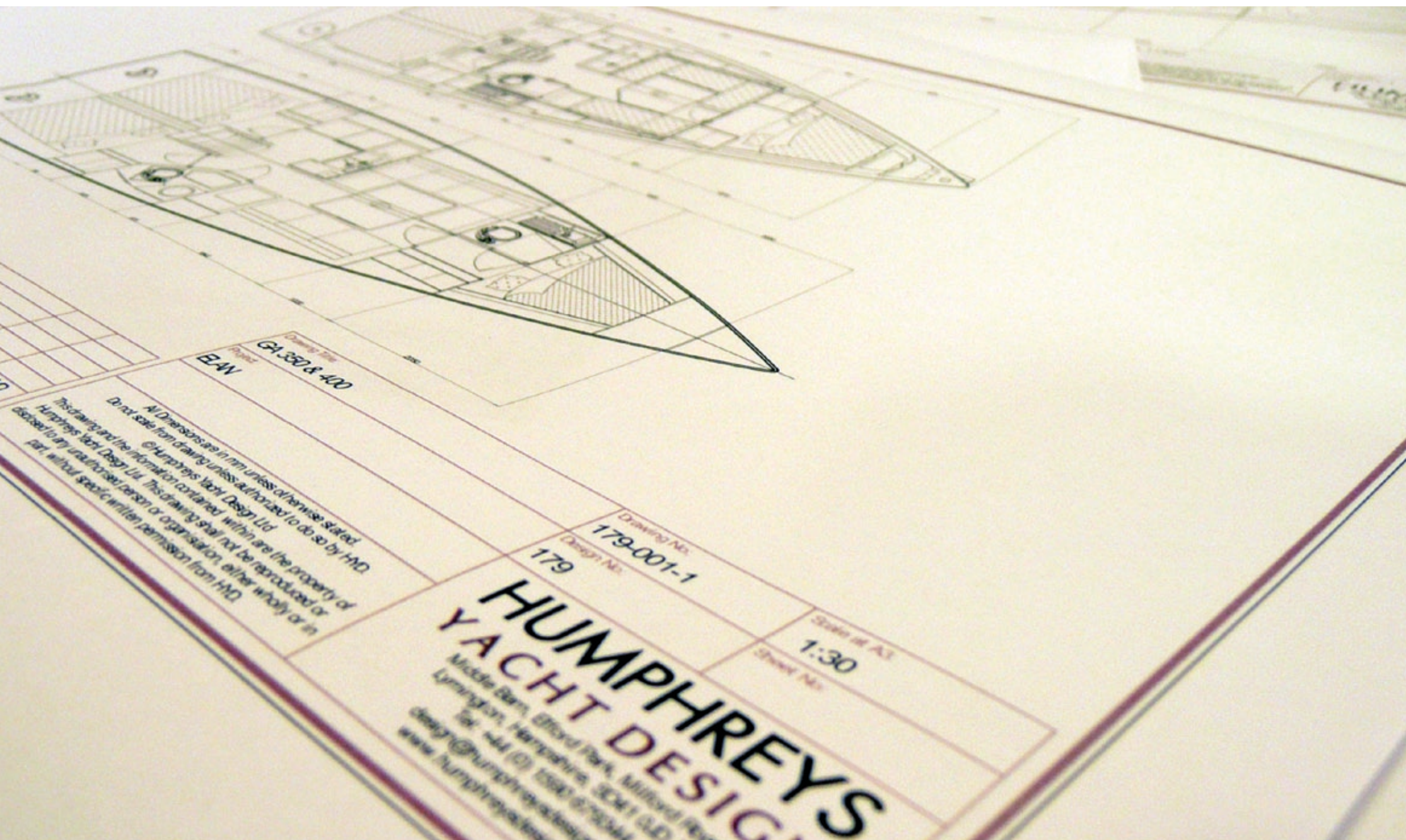
Rob Humphreys is an award-winning naval architect known internationally for his expertise in designing sailing yachts that successfully combine fast, modern hulls with all the comfort and convenience demanded by today's cruising sailor. The Humphreys Design team has an enviable track record of designing racing boats for the world's leading events; including the America's Cup and the Whitbread/Volvo Round the World Race, as well as for leading sailors such as Ellen MacArthur. At the same time Humphreys Yacht Design has built a reputation for consistently creating popular and capable cruising boat ranges for internationally known builders such as Elan, Oyster and Northshore Yachts.

ELAN DESIGN TEAM

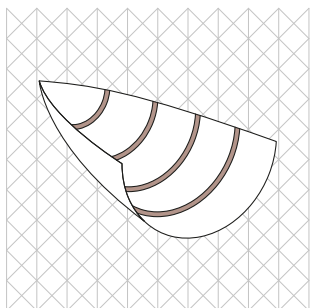
The Elan Design Team is comprised of devoted professionals, responsible for the development of every new project in the shipyard. Their persistent search for innovative solutions enhancing Elan's sailing performance, cruising comfort or optimal production techniques are proved by the team's enviable track record of European Yacht of the Year titles and nominations. With the Elan Design Team leading the way, the Elan and Impression brands have a bright future ahead.

GIGODESIGN

Elan invited Gigodesign, an award-winning design agency specialized in sports and leisure industry, to cooperate with the in-house R&D department and develop an integrated solution for the yacht interior across the whole range. The fruit of this partnership is already visible on the Impression 494's interior with a distinctive styling and functional details.

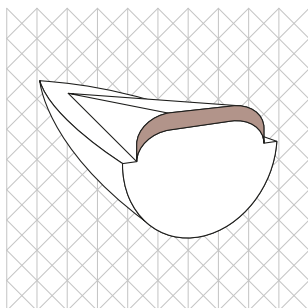


YACHT FEATURES



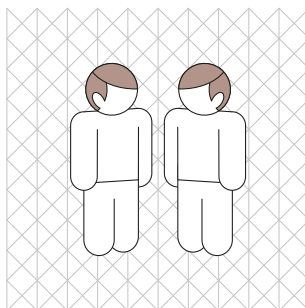
VACUUM ASSISTED INFUSION LAMINATION

The 3D VAIL technology brings better load-carrying capacity, increased hull strength and reduces the risk of osmosis.



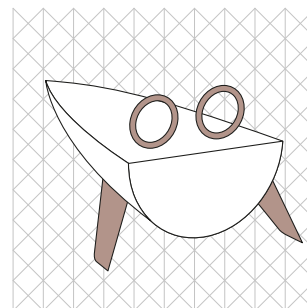
DECK SALOON VOLUME

The deck-saloon layout provides extra volume in comparison to traditional designs as a bigger beam is available and put to good use.



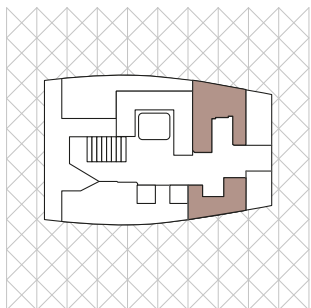
SHORT-HANDED SAILING

Short-handed solutions improve the yacht's safety and comfort, easily operated by limited crew.



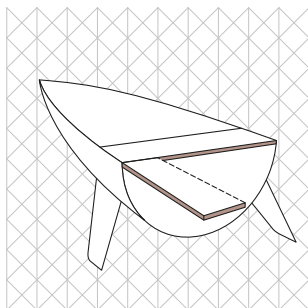
TWIN-WHEEL TWIN-RUDDER SYSTEM

The VOR inspired solution ensures better control and handling even in extreme conditions.



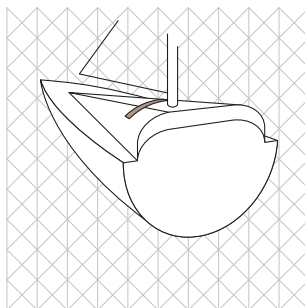
DSI - DECK SALOON INVERTED

We inverted the layout and put the saloon forward of the companionway, so the social area is located at full beam.



INTEGRATED GANGWAY

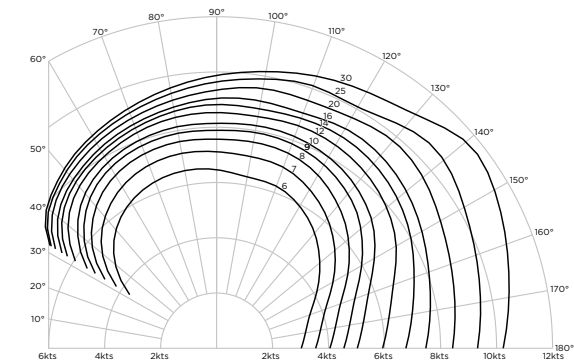
The gangway is integrated in the yacht's transom which adds simplicity to life aboard and is ready to deploy or store in no time.



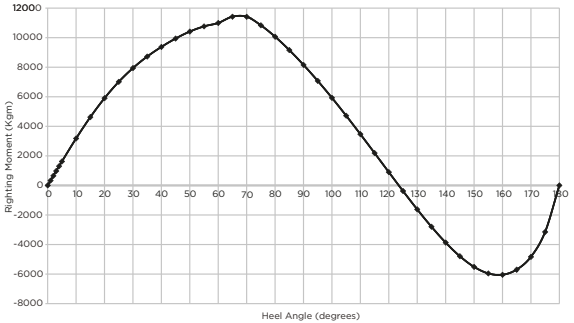
SELF-TACKING JIB

A comfortable solution, designed for short-handed crews, brings easy manoeuvring in any weather conditions.

TECHNICAL AND PERFORMANCE CHARACTERISTICS



POLAR DIAGRAM - FAST CRUISING PERFORMANCE
The yacht features a very high pointing ability without compromising an easy and fast downwind performance.



STABILITY CURVE - SUPERIOR SAFETY AND STABILITY
The Elan Impression 494 boasts a superior stability curve and was designed as a forgiving, stable yacht for safe navigation in every sea condition.



Lenght overall	14,90 m	48,88 ft
Hull Lenght	14,85 m	48,72 ft
LWL	13,76 m	45,13 ft
Beam max.	4,68 m	15,35 ft
Bwl max.	4,04 m	13,25 ft
Draft	2,23 m/1,80 m	7,32 ft/5,90 ft
Displacment	app. 14.500 kg	app. 31.967 lbs
Ballast	4.500 kg	9.921 lbs
Engine power	55 kW	75 hp
Fuel capacity	295 l	64,89 gallons (UK)
Water capacity	605 l	133 gallons (UK)
Maximum crew	10 persons	
Cabins	4	
Berths	8 + 2	
Mainsail	67,06 m2	721,83 ft2
Genoa	49,22 m2	529,79 ft2
Spinnaker	127 m2	1.367,02 ft2
I	18,74 m	61,49 ft
J	5,25 m	17,23 ft
P	17,90 m	58,73 ft
E	6,25 m	20,50 ft
Design	Humphreys Yacht Design & Elan Design Team	
Interior Styling	Gigodesign	



Elan have committed to a comprehensive environmental management system, minimizing its impact on nature. Both Elan's skiing and shipyard divisions boast the ISO 14001 standard for an environmentally friendly production.



Elan yachts carry the Germanischer Lloyd Certificate for highest standards in safety and build. The structural build quality is inspected at various important stages throughout the construction.

All measurements, images and illustrations are approximate and provided for information only.

Elan reserves the right to modify or improve specifications without prior notice.

Design: GIGODESIGN
Photo: STUDIO BOMBA

elan

WWW.ELAN-YACHTS.COM



Elan d.o.o., Begunje 1, 4275 Begunje na Gorenjskem, Slovenia, sail@elan.si, www.elan-yachts.com